



## BOARD MEMBERS

Patti Lennon, Co-President

Larry Martin, Co-President

Ann Hunsicker, Treasurer

Susan Czerepak, Secretary

Nancy Engels

Laurie Gee

Steve Gratton

Samantha Stevens

## 2018 Fall Newsletter

### Presidents' Message

Dear Members,

Another summer season has come to an end, and what a productive summer it was for our association and its members. Some of the highlights of our successful activities were the community yard sale, Color Challenge, VIP training and annual picnic with live music. This season we also developed Visitors' information bags, as well as updated and are now selling new Echo Lake maps.

It was great to see so many people taking advantage of the warm summer weather by swimming, boating, biking and walking in and around our Echo Lake community. One of the things we all have in common as members of this association is our desire to protect Echo Lake so we can continue to enjoy the activities we love. Throughout the years the ELPA board has developed numerous, ongoing programs designed to protect the pristine waters of our lake, such as Vermont Invasive Patrollers, Lake Wise and Access Greeter. We have always looked at the Access Greeter program as our first line of defense in preventing the devastating effects of an aquatic invasive species infestation. Our board is looking for volunteers to join the newly formed Access Greeter Committee in order to ensure this important program continues to operate smoothly. If you are willing to help by becoming a member of the Access Greeter Committee, email Patti Lennon at [pattilennon@aol.com](mailto:pattilennon@aol.com).

In addition, we are also looking for a volunteer who can help us maintain and make occasional updates to our website. Anyone with expertise in this area, please contact Susan Czerepak at [susanczerepak@gmail.com](mailto:susanczerepak@gmail.com).

Thank you to our board and committee members for your continued dedication and hard work. In addition, we'd like to thank all of our volunteers for your time, energy and enthusiasm in supporting our programs. And, thank you to all of our members, for your continued financial support through dues and generous donations.

Sincerely,

Patti Lennon, Co-President

Larry Martin, Co-President

### Treasurer's Message *by Ann Hunsicker*

It's hard to admit a beautiful summer is drawing to a close and fall is upon us. We had some terrific weather and ELPA members and volunteers used it all to keep our lake in great shape.

Our financial health has been well taken care of despite a decrease in membership. In part, our financial health is a result of the dues increase that was approved at the 2017 annual meeting. The amount collected to date for dues in 2018. The amount collected to date for dues in 2018 is \$3775 (\$2430 in 2017). We have collected about the same amount in

donations so far at \$4402 (\$4550 in 2017). We hope these numbers will increase by the end of this calendar year. Remember all dues and donations are tax deductible since ELPA is a 501(c)3 organization!!

Of interest in other fundraising, we raised less money in 2018 on the Color Challenge. In 2017 we raised a total of \$6655 but in 2018 the total was \$4661. This was probably due to the Newport Centennial celebrations, which happened on the same day as our Color Challenge. It was also an extremely hot day and that may have discouraged some people from coming out. Some neighbors decided to get together and hold a yard sale this summer and donate some of the proceeds to ELPA. The total amount donated was \$393. In 2018 we also produced an updated map of our Echo Lake including all the names of landowners. The cost of producing these maps (not including many volunteer hours by Laurie Gee) was \$914 and so far we have raised \$545 by selling the maps. Please contact Laurie if you still haven't bought a map for yourself or as a gift!

This year we were awarded two grants. An aquatic nuisance grant in the amount of \$11,904 and a watershed grant in the amount of \$5000. We have not yet received all of these monies but hope to do so before the end of the year.

Our largest expense is the cost of running our access greeter program. The cost of running the program was almost exactly what it was last year, \$13,169, including a workers comp policy for our employees. Other expenses have been pretty much in line with previous years, although we did spend some money, approved at the annual meeting, to create some gift bags for potential new members. We are also funding the education programs at Charleston Elementary School slightly above the amount generously given to us by an anonymous donor.

Last year we began a contingency fund to pay for any unexpected expense related to an invasive species in our lake. Fortunately our finances are in good shape and so we plan to add to that fund this year. Thanks to all our dedicated volunteers and financial contributors ELPA continues to be in a sound financial position to protect our lovely lake and its surroundings.

### **Membership Report by Tom Wagner**

The following are members of the committee: Ann Beams, Holly Bull, Nancy Engels, Steve and Ann Gratton, Ann Hunsicker, Tracey Shadday, and Jean Wilson.

Our membership numbers have decreased since this time last year, from 75 families, 12 individuals and 1 friend in 2017, to 68 families, 11 individuals and 9 friends in 2018. However, due to the increase in dues approved at the 2017 annual meeting we have received more dollars.

Early in the summer the committee made up about 100 visitor bags loaded with useful information for visitors and delivered them to most of the rental properties around the lake, and to those who had not paid dues previously. This may be the reason there was an increase in our Friend category. The Friends of Echo Lake Form can be found on our website along with our Membership Form. If anyone wants a visitor bag, let Tom Wagner know.

### **Online payment by Susan Czerepak**

In an attempt to catch up with the 21<sup>st</sup> century, this year we are making possible online payment of dues and donations. To contribute directly through PayPal, using either your PayPal account or your credit card, visit our website page at <https://www.echolakeassociation.net> and open the Support ELPA tab. <https://www.echolakeassociation.net/membership/dues-donations/>

### **Nesting Loons on Echo by Laurie Gee**

Here's hoping for a healthy nesting season and loon chick launch in 2019! After the 2017 success our loons had making use of the nesting platform for the first time, 2018 was a rollercoaster ride.

Our loon pair returned to the floating platform right on schedule in late May and hatched two chicks on June 24<sup>th</sup>. There were several mink lurking all during the hatch, and some anxious moments when the male loon would arrive to save the day, swimming underwater to chase a mink away. But it was Mama Loon who spread her wings to swat a young mink off the nesting platform mid-chick hatch! Unfortunately, by 5am the next morning both chicks were gone—we assume the predators were the mink, but who knows. Heartbreaking. Perhaps sadder was hearing the haunting calls and cries of the parent pair, seemingly looking around and calling for their chicks for days afterwards.

On July 8<sup>th</sup> we saw the loon pair on our beach, engaged for a second go! The nesting platform had been hauled in a couple weeks earlier. We consulted with Eric Hanson\*, who suggested we could put the raft in the water again or let nature take its course. Having found two eggs in the water in 2016, we decided to give the pair a chance to nest again. The raft went back out, a few yards deeper, and our loon pair returned within hours to check it out. By the next

day, they were settled in for the long haul...a very long haul. We could easily see the two eggs from our dock, and we hoped for the best even though it'd be a very late hatch. The pair faithfully stayed on the nest for a few weeks beyond the usual 28-29 days required. They eventually abandoned the eggs on the nest—again, we have no way of knowing what happened or whether the eggs had ever been viable.

\*Eric is the longtime director of Vermont Center for Eco-Studies' Vermont Loon Conservation Project. You might be interested in following this link to a recent education session he gave. He's an engaging speaker and we always learn something from his talks: <https://YouTube.be/v2cePp2llq4>

### ***Access Greeter Program by Terry O'Brien***

We had a much more active season compared with 2017. There were 1042 inspections conducted in 2018, and 755 conducted in 2017. The difference was most likely due to the more favorable weather this season plus the increase in kayak use. There was only one confirmed instance invasive milfoil this year. The boating public has become very aware of invasives and the penalty for transporting. The educational value of the Greeter program is resulting in the decrease.

### ***Access Greeter Committee Members Needed by Patti Lennon***

Next season we will be taking a new approach to running the Access Greeter Program. In years past, one or two people have been responsible for coordinating the entire program including hiring, training, data collection, payroll, as well as overseeing both the volunteer and paid greeter programs.

Jean O'Brien, Terry O'Brien, Lisa Martin, Maryanne O'Brien and Patti Lennon have volunteered to take care of the hiring, training, data collection, payroll and volunteer access greeter program. We are looking for additional volunteers who would be willing to coordinate the paid access greeters' schedules and supplies. It would be great to have multiple volunteers to divide up the work throughout the summer "as many hands make light work".

Please consider joining the committee to oversee the paid access greeter program. Contact [pattilennon@aol.com](mailto:pattilennon@aol.com) for more information.

### ***Lake Bed Survey by Peggy Stevens***

The report from the Echo Lakebed Survey volunteers is complete as of the end of September and the news is good. Our team of volunteers, all VIP (Vermont Invasive Patrollers) trained, conducted 41.5 hours of survey time early in the summer and again at the end of the season. The entire perimeter of the lakebed was surveyed, with many sections overlapping, which ensured a thorough inspection for invasive species. No invasives, Eurasian milfoil or otherwise, were detected.

As with last year, surveyors noted less vegetation overall as compared to previous years. Peggy Stevens, lakebed survey coordinator, forwarded data sheets to Kim Jensen at the Agency of Natural Resources, with a request for a possible explanation for the reduced plant life in Echo Lake. Are phosphate levels down, accounting for less growth, or are acid levels up? Seems unlikely the weather is a factor, as this summer was so hot and dry as compared to last which was wet and cool for the better part of early summer.

No matter what, there is no question about the success of the Lakebed Survey. In addition to making certain no invasive species have taken hold, many of our survey team have also been collecting data on the types and concentrations of native plant life in the sections they survey. We are maintaining maps reflecting this information as a basis of comparison to other years.

Another feather in our cap is to have hosted a VIP training for the region in early summer with Kim Jensen of the ANR Lakes and Ponds division. Twenty-two participants, many from Echo Lake, were trained or in several cases had previous training updated with new resources provided by the State of Vermont. Although the training is not required in order to be a lakebed surveyor, it certainly is an extra benefit in the effort to keep Echo invasive-free.

Thanks to our small army of surveyors, and special thanks to Holly Bull, who has continued her effort to double-check many of our most vulnerable areas on the shoreline. If you would like to become a participant in this effort, please contact Peggy Stevens at 723-5951 or [pegnericstevens@gmail.com](mailto:pegnericstevens@gmail.com).

## Echo Lake Explorers by Jean Wilson

As part of our community outreach efforts, ELPA has funded an after-school program called the “Echo Lake Explorers” led by Wyatt Peterson of the NorthWoods Stewardship Center. The Echo Lake Explorers is made up of 11 middle school students from Charleston Elementary School.



Echo Lake Explorer, Colby Pothier

The after-school program is centered around Echo Lake and the surrounding area. Consequently, the program is able to have great, diverse after-school sessions. During a couple of these sessions, they paddled around the southern end of Echo exploring the shoreline. The students discussed both historic and current land use and how that can impact the health of the lake. With the Echo Lake Farm on the water, the explorers highlighted potential consequences of nutrient run-off, such as eutrophication, and how to regulate nutrient run-off with buffer zones and planting trees near the water.

One day on a NorthWoods property, they hiked out to a glacial erratic, a massive boulder deposited by receding glaciers. This occurred ten thousand years ago, the time when Echo Lake and many of the lakes around the NEK formed. The students talked about how this giant rock hints that the bedrock in the Echo Lake area is mostly composed of granite. They learned that this is an example of bedrock formed by slowly cooled molten rock that was eventually pushed upwards millions of years ago.

## Lake Wise Program Progress and Updates by Ann and Steve Gratton

This year we became the Echo Lake Wise Coordinators for Echo Lake. As you all may have heard by now, Echo Lake was the first to receive the Golden Lake Wise Award in the state of Vermont during the summer of 2017. The goal of the Lake Wise program is to establish a new normal; a new culture of lakeshore landscaping that is proven to help protect our lake. A property that earns the lake wise award has shown that it is well-managed using shoreline best management practices, and is maintained to care for the lake.

This past summer was again a busy one for the Echo Lake Lake Wise program with shoreline visitations and consultations with Amy Picotte, (State of Vermont Lake Shore Manager), and Lake Wise Awards.

This past summer, Lake Wise Awards were presented to 5 additional properties, bringing the new total to nearly 30%, of shoreline owners. Imagine .... if we could get to 50%?

### **Congratulations to:**

- John Holt and Lorrie Farrell
- Ann and Peter Hunsicker
- Karl Koenigsbauer Jr.
- The Bull Family
- Mark Deyrup

Anyone that would like more information regarding the Lake Wise Program and Practices please feel free to contact us at [sgratton911@gmail.com](mailto:sgratton911@gmail.com) or calling us at 603-848-2131

And please visit the Lake Wise website: <https://dec.vermont.gov/watershed/lakes-ponds/lakeshores-lake-wise>

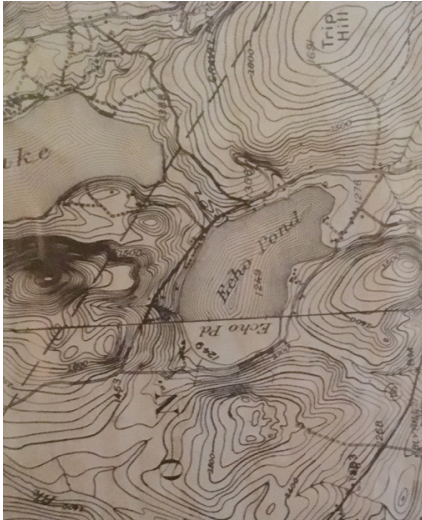
Looking forward to seeing you all next summer.

## Little Free Library by Tom Wagner

Amy Wagner has established a Little Free Library at 1703 E Echo Lake Road. The Little Free Library is a neighborhood book exchange site, designed to build community, spark creativity, and encourage and inspire reading. Take a book, and share a book. Share the news of this library with your friends and visitors. There are now more than 75,000 Little Free Libraries around the world, and now we have one on Echo Lake for all to enjoy!

## An Anomaly by Greg Carpenter

This summer I decided to stop by a yard sale taking place around the lake. As I scanned the items for sale something unusual caught my eye. It was an old barn board framed lake map. The one body of water around our camp surprised me by being labeled Echo Pond- not Echo Lake. Thinking the map was pretty unique, I decided to purchase it and learn just how old the map may be. My journey to find that answer included a visit to the Vermont State Archives and the Vermont State Library.



The mystery tour began with a trip to the State Archives. There I learned about geographic naming Statutes and that the Vermont Board of Libraries is in charge of naming or changing the name of such things as mountains, roads, ponds or lakes, but nothing further. The answer to why Echo Pond is no longer used came from the Vermont State Library. One clue was found from within the United States Board on Geographic Names Domestic Geographic Names application. In the 1982 application, it stated "All local officials and residents use Echo Lake as an appellation (sic) for this feature. The word "Pond" is no longer used. The document also revealed that three local residents from Charleston supported the name change. Recommending the change included two farmers named Jack Andrews and John Moffit, and a merchant Willard Blackburn. As to "when" the name changed, the U. S. Board on Geographic Names supplied the answer. Echo Pond was officially changed to Echo Lake sometime between October 1982 and June 1983. Oddly enough though, the U. S. Board, which makes decisions before action is taken to change a name, never formally discussed the change. In the end, the

memo ended up just being reviewed and accepted by a member of the staff. As to the exact date the lake name changed, no one knows for sure. Maps dating from 1924 to 1974 would have been listed the lake as Echo Pond. In the end I guess I can be satisfied with that.

### Sources

Shaw, April, Librarian, Vermont Department of Libraries, September 26, 2018

Geographic Naming: Vermont Statutes, Title 10, Chapter 9: Geographic Names

United State Board Geographic Names Domestic Geographic Names Report Vermont Department of Libraries, October 1982

## 2018 Echo Lake Maps for Sale

Laurie and Keith Gee have the new maps available at [1008 W Echo Lake Road](http://1008WEchoLakeRoad.com) if you're around and want to purchase. Give a call ([723-4886](tel:723-4886)) or email: [laurie.eckels.gee@gmail.com](mailto:laurie.eckels.gee@gmail.com) with any questions. Of course, these useful and decorative maps will be available next summer too.

Maps are \$20 apiece, or \$15 apiece if you are buying more than one.

## Echo Lake Color Challenge *by Patti Lennon*



Despite high temperatures and intense humidity, we had walkers and runners ranging in age from 4 to 81 participate in the Color Challenge. Throughout the years, the success of our Color Challenge has been based on the support of our local businesses and the enthusiasm of our participants and volunteers. Our little 5K race has evolved into a community event, as well as a major fundraiser for our association.

We are very grateful to the local businesses whose sponsorship has contributed to our fundraising success, year after year. In addition, we are also grateful to our businesses that supplied over \$1,200 in raffle prizes. Sometimes it is difficult to know what people enjoy more: the run, the powder or the raffle prizes.

Thank you to the Beams, Koenigsbauer, and Wilson families for not only volunteering but also hosting our event each year on their beautiful properties. In addition, we'd like to thank our 30 plus volunteers and the Color Challenge committee for providing the **fun** in fundraiser.

Planning for the 2019 Color Challenge is underway, and the event will take place on Saturday July 6<sup>th</sup>. Registration will be available January 1<sup>st</sup> on Active.com. We look forward to seeing neighbors, friends and family of all ages and abilities at the 2019 Color Challenge.

### Get Involved

If you are not already a member, please consider becoming one. If you don't want to be a member, consider being a "Friend" for a contribution of \$25. The 2018 dues and donations forms are available on our website at <http://www.echolakeassociation.net/membership/dues-donations/>.

If you are interested in becoming more involved or volunteering there are several options.

- Membership Committee – Tom Wagner – [wagsvt@gmail.com](mailto:wagsvt@gmail.com)
- Fund Raising – Patti Lennon – [pattilennon@aol.com](mailto:pattilennon@aol.com)
- Lake Survey – Peggy Stevens – [pegnericstevens@gmail.com](mailto:pegnericstevens@gmail.com)
- Access Greeter – Terry O'Brien – [obrien6417@yahoo.com](mailto:obrien6417@yahoo.com)
- Green-up Day – Ann Hunsicker – [ahunsicker17@gmail.com](mailto:ahunsicker17@gmail.com)

## Important Dates

- January 19, 2019 – Board Meeting
- May 4, 2019 – Green Up Day
- May 21, 2019 – Board Meeting
- July 6, 2019 – Color Challenge
- July 20, 2019 – Annual Meeting
- August 17, 2019 – Annual Picnic
- September 14, 2019 – Board Meeting

## Vermont Conservation License Plates

A reminder that half of the proceeds derived from the sale of Vermont Conservation License Plates goes towards funding the Vermont Watershed Grant Program. If you are a Vermont resident, please consider purchasing a Vermont Conservation License Plate to support this program.

Please visit our website for more information - <http://www.echolakeassociation.net/>



# Welcome to Echo Lake



## 2018 MEMBERSHIP DUES AND DONATIONS FORM

### MEMBER/FRIEND INFORMATION

NAMES:

EMAIL:

1. \_\_\_\_\_

\_\_\_\_\_

2. \_\_\_\_\_

\_\_\_\_\_

MAILING ADDRESS:

Street: \_\_\_\_\_

City: \_\_\_\_\_

State: \_\_\_\_\_ Zip: \_\_\_\_\_

Phone: \_\_\_\_\_

ECHO LAKE ADDRESS:

Street: \_\_\_\_\_

Phone: \_\_\_\_\_

### ECHO LAKE PROTECTIVE ASSOCIATION DUES & DONATIONS FOR 2018

DUES: Individual: \_\_\_\_\_ \$25

Family: \_\_\_\_\_ \$50

Our goal is to have 100% of property owners on Echo Lake be members of ELPA.

Friends of Echo Lake: \_\_\_\_\_ \$25

“Friends” of Echo Lake will be included on our mailing list but will not have a voting interest in the organization. If you are a frequent visitor to the lake and don’t want to become a member, then please consider helping us preserve the lake by becoming a “Friend.”

DONATIONS:

The protection of Echo Lake from the incidental contamination with aquatic invasive species is a continuous effort that incurs expenses. Would you be willing to make a donation to help protect the water quality of our lake?

Yes, I'd like to contribute to fund the water quality protection programs:

\$300 \_\_\_\_\_ \$200 \_\_\_\_\_ \$100 \_\_\_\_\_ \$50 \_\_\_\_\_ Other \_\_\_\_\_

**ELPA is a 501(c)(3) organization; your dues and donations are fully tax deductible.**



*Thank you from your ELPA Board!*

**ELPA Use**

Date Rec'd. \_\_\_\_\_ Check # \_\_\_\_\_ Acknowledgement Sent \_\_\_\_\_

MAIL TO:     TREASURER ELPA  
              P.O. BOX 41  
              EAST CHARLESTON, VT 05833

ELPA  
PO BOX 41  
EAST CHARLESTON, VT 05833