



OFFICERS & BOARD MEMBERS

Laurie Gee, President
Ann Hunsicker, Treasurer
Susan Czerepak, Secretary
Holly Bull
Steve Gratton
Lori Kempton
Karl Koenigsbauer
Carol Martin

ELPA Spring Newsletter *April 2022*

President's Message

Dear Members,

I am writing this message on an early-April day of bright sunshine and 60 degrees! It looks like we have many days of rain coming right up, so potholes and car-sucking mud grooves will be back in force—just the usual rites of spring. By the time this newsletter lands in your in-box, I imagine we'll have much firmer roads and lots more neighbors and friends leaving footprints on them each day!

Unfortunately, the newest Covid variant, BA.2, is making the news in Vermont, once again calling into question what summer will look like. The good news is that we elders can now avail ourselves of second booster doses, there are loads of free Covid rapid tests available, and "outdoor" season can't be too many weeks away.

Our Access Greeter program, so critical to keeping our lake pristine, will launch

Memorial Day weekend. We are thrilled to be able to host the Color Challenge again after two summers of disappointment! A decision on how best to conduct our July 16th annual meeting will not be made in time for this newsletter, but will be a topic for our mid-May board meeting. At the annual meeting, we will be electing three new board members, and we will fill three officer positions: co-presidents and secretary. I anticipate we'll be able to enjoy our August 13th potluck picnic since it's an outdoor event.

As usual, ELPA's board and committee members have found ways to work from a distance, so be sure to read all the articles that follow. Let's all do our best to support ELPA, the wider community, and each other. Be kind, be safe, get boosted, and we'll see you on and around this beautiful lake!

Laurie Gee, President

Our Finances by Ann Hunsicker

ELPA is very stable financially right now, due to the hard work of the Board and tremendous support from its members and grant sources. We again received two grants from the state in 2021, totaling \$15,134. In addition, we received a grant from the Town of Charleston for \$1000 and another from the VCF for \$2,400 in support of our Charleston School programs. Once again, our thanks to Laurie Gee and Sam Stevens, intrepid grant writers, and the Town of Charleston for facilitating our grants. We also received \$4,475 in dues payments and \$10,000 in donations, both increases from 2020. The Color Challenge had to be cancelled in 2021 due to Covid, however we plan to hold it in 2022 so we can all look forward to that fun day, not to mention the

additional funds which will be raised.

We continued to run our Access Greeter program, our largest expense. The Board elected to continue having the greeters available past Labor Day to extend the protection they provide. We also continued to fund two programs at the Charleston Elementary School. The ELPA Board feels these programs are an essential means of broadening our efforts at educating those who use our lake, extending this to the children at our local school. We will continue searching for other funding sources in the future.

It is again hard to predict what will happen with our finances in 2022. We know we will receive full funding of our Watershed grant (\$5,000), but do not yet

have word of what we will receive from the Aquatic Nuisance grant. Our membership committee will continue to ask people to contribute in the form of dues and donations, and remember, your dues and donations received earlier in the year help the board plan our monitoring and other events for the coming season. We are a 501(c)3 organization so all dues and donations are tax deductible! You can mail your contributions or we have the ability to receive payments through PayPal.

You can also support ELPA by making donations from your IRA and through Amazon Smile (see other articles in this newsletter).

Thanks again to all our members who contribute financially and with their time.

REMINDER

DON'T FORGET TO PAY YOUR 2022 MEMBERSHIP DUES

JUST GO TO echolakeassociation.net

Click Support ELPA

REGISTER TO PAY ELECTRONICALLY OR BY MAIL

THANK YOU FOR YOUR SUPPORT

ELPA Doesn't Work Without Volunteers ...

Maybe you'd like to pitch in. There are lots of opportunities, including but not limited to ...

- Volunteer time as a greeter at the boat access.
- Participate in the lake survey as a Vermont Invasive Patroller.
- Help the Membership Committee.
- Offer updates to the website.
- Supply photos and ideas for our Facebook page.
- Help out with the Color Challenge, where a variety of volunteer opportunities are available.
- Host a workshop.
- Help with set up and clean up of our Annual Picnic.
- Become a Board member.
- Participate in Green Up Day.
- Help with trail maintenance.
- Write an article for our newsletter.

Whatever your experience and skills, we would be happy to point you in the right direction. Contact Laurie Gee at: laurie.eckels.gee@gmail.com .

Echo Lake Ice-Out

Along with the arrival of swallows, daffodils, spring peepers, and bears, Ice-Out is an early annual harbinger of Spring. The day in Spring when a water body in Vermont becomes completely ice-free from shore to shore is known as the "Ice-Out date."

Larry Slason has been tracking the dates over the past decade. Maybe others of you have records of earlier years.

The date of Ice-Out is subjective rather than scientific, but it's fun to track.

The latest Ice-Out on record for Echo Lake is May23, 1973 !



- 2011 - April 26*
- 2012 - April 4*
- 2013 - April 24*
- 2014 - April 29*
- 2015 - May 3*
- 2016 - April 12*
- 2017 - April 21*
- 2018 - May 4*
- 2019 - April 27*
- 2020 - April 24*
- 2021 - April 12*
- 2022 - April 19*

Take the Color Challenge!

By Patti Lennon



After what has seemed like an eternity, ELPA is once again hosting the Color Challenge on Sunday, July 3rd. Don't miss this wonderful opportunity to be with your family, friends and neighbors while supporting the lake you love. Our family fun run is open to people of all ages and all abilities. You can walk, skip or run the gentle, rolling 5K loop on West Echo Lake Road while being showered with colored powder at five color stations throughout the

course. After the race enjoy post-race snacks and a chance to win amazing raffle prizes. This year, we are keeping the registration fees the same. You can save money by pre-registering. With each registration, we will provide sunglasses, a white t-shirt, post-race snacks and a raffle ticket. You can pre-register online at <https://www.active.com/east-charleston-vt/running/distance-running/echo-lake-color-challenge-2022> or download our mail-in registration form from <https://www.echolakeassociation.net/activities/color-challenge/>. Individual registration fee is \$15 per person; day of event registration is \$20. Or you can form a "team" of four friends, family, or neighbors. Team registration fee is \$50 per team of four people; day of event team registration is \$60. The couples' registration fee is \$30; day of event registration is \$40. See you at the 2022 Color Challenge!

Simple way to reduce your taxes and help ELPA

By Tom Wagner

If you are over 70 ½ you can make your donations directly from your IRA using a Charitable IRA Rollover. Using this option, you can donate some or all of your Required Minimum Distribution, and the benefit is that the distribution does not count as income. **Why is this important?** In 2017 the

tax laws changed so that almost no taxpayers can itemize deductions, and as a result only \$600 of your donations can be used to reduce taxes. By using the IRA Charitable Rollover, you will be able to donate some of your Required Minimum Distribution yearly to charities of your choice and pay no income

tax on this income. (Up to \$100,000... wouldn't that be nice!) Your donations can go to as many nonprofits as you want, and you decide how much of your Required Minimum Distribution to donate. Call your financial advisor or investment company for assistance. It is a very simple and easy process.

Water Quality Updates

By Holly Bull

Lake Reclassification:

Echo Lake’s petition to reclassify to an A(1) surface water has stalled at the upper levels of the Department of Environmental Conservation (DEC). DEC is working on a “legislative fix” to amend the current septic restrictions before reclassifying *any* lake to an A(1) status. Right now, no new septic system with a greater than 1,000 gallons per day discharge is allowed in an A(1) watershed. This delay is disappointing, but ELPA will continue to push to have Echo Lake reclassified so that it can be protected and given the attention it deserves. The ELPA Reclassification Committee has been in contact with NEK Legislators and members of the House Committee on Natural Resources, Fish & Wildlife to make them aware of our plight. Fingers crossed our petition moves forward soon.

LaRosa Testing:

There will a second year of LaRosa Tributary Testing for Echo Lake. Having



two- or three-years’ worth of data is the best way to get a true understanding of what is flowing

into our lake. ELPA is happy to report that we applied for two additional streams this year and did receive funding for them. Again, a huge “thank you” to the landowners who allow us access to these streams through their property.

Analysis of 2021 Phosphorus Data

By Peter Engels

Phosphorus is the critical ingredient that causes lakes to degrade, as it can result in an increase in water temperature and a resultant increase in plant growth in the lake. After a number of years where our phosphorus was actually below that in Seymour lake, Seymour’s phosphorus is significantly better; we need to do the same with Echo Lake — remember, Seymour Lake is the

principal water source for Echo Lake! A somewhat brief analysis is that the average phosphorus content in Echo Lake has declined by a bit more than 10 percent. So, our phosphorus level drop of 10 percent is good, but we’d like to see this keep going down, rather than the increase that we have seen in the three previous years.

History of ELPA VIP Program

By Peggy Stevens

The following is from a panel presentation Peggy recently gave at the April FOVLAP virtual conference.

Echo Lake's Vermont Invasive Patrollers (VIP) program was initiated in early 2000's (not sure exactly when) during Peggy Stevens' tenure as ELPA President, concurrent with the establishment of our Access Greeter Program. VIP training is a must for any Access Greeter, employee or volunteer, in order to ensure thorough inspection of vehicles, boats and trailers before launching. Even as all weeds are removed in the inspection process, being able to identify suspicious weeds and send them off for review by Lakes and Ponds biologists is key. Lakes and Ponds biologists are trainers for VIP workshops as well. A VIP trained volunteer serves as a resource to inspectors, receiving suspicious samples from Access Greeters and sending them to Montpelier for review.

This Access greeter inspection process also enables inspectors to educate the public about invasive species, reasons why it is important to know which water bodies are infested by invasives, and why clearing weeds from boats, trailers and vehicles when leaving a water body is not only required by law but essential to preventing future infestations next time the boat is launched in a different water body. Echo has been fortunate to obtain grants from the Lakes and Ponds Division to establish our Greeter program and pay a wage sufficient to maintain trained greeter staff, who cover the busiest hours

at the access from May to September, with VIP-trained Coordinators who make sure off hours are manned by trained volunteers.

ELPA has worked with various Lakes and Pond staff since the beginning, from Ann Bove, to Leslie Matthews to Kim Jensen. Over time, at least a dozen and a half Echo Lake Access Greeter staff, volunteers, and concerned property owners have been trained as VIPs in local VIP workshops. ELPA has sponsored workshops in Charleston and Morgan and accessed workshops provided elsewhere. VIP trainers have attended ELPA annual meetings as well, to provide general information about aquatic invasive species and the VIP program. Protocols for doing inspections are key parts of the training, as well as providing guidance about roles and responsibilities of inspectors, how to communicate effectively with boaters, what to do if a boater is uncooperative, and what support is available from VT Fish and Game in that case. Though not required, several Echo Lake VIPs have attended second VIP workshops for an update and refresher.

An outgrowth of the VIP training occurred with Leslie Matthews when she came to Echo expressly to provide training in lakebed surveying. In kayaks, snorkels and wet suits, we toured the lakebed, from shoreline perimeter out to about 20 feet, with Leslie; using the scopes made and provided to us by Leslie, we became familiar with the native, naturally occurring

vegetation and developed a sense of what we might find and where in the lake.

Thus began what has become an annual volunteer ritual by dedicated Lakebed Surveyors. In late June, and then again in late August or early September, volunteers survey their assigned sections of the lake to search for aquatic invasives that may have escaped inspection and begun to establish themselves. If detected early, it is possible to reverse the infestation by calling in Lakes and Ponds biologists to perform eradication procedures. If a sample of an unfamiliar species is found rooted or floating, that sample is sent to Lakes and Ponds for review. Recently, we started sending photos rather than mailing samples which has actually been very effective in identifying questionable samples.

Every section of the lake has an assigned surveyor, and sections overlap to ensure coverage. We use the documentation provided by Lakes and Ponds to record dates and specifics of surveys, and map what species are found where in the lake. Over time, that data has helped us track trends in what species are found/likely to be found where; when density of vegetation changes and where; places where the lake bed may be filling in, and helps us to speculate why these data points might be occurring or changing.

Thus far, and knock on wood, Echo Lake has fended off invasive species.

Conclusion:

What makes our VIP program successful is the commitment by our first line of defense, our Access Greeters, and the second line of defense, our volunteer Lakebed Surveyors, and our project Coordinators and Board members.

In terms of equipment, we are very low tech; we don't use special mapping tools or other apps. Access Greeter inspections are performed by eye and hand to remove weeds from vehicles, boats or trailers. Kayaks and pontoon boats are commonly used in the lakebed survey, and many surveyors swim and snorkel. The scopes made of plexiglass screwed onto black plastic culvert pipe were provided by Leslie many years ago and are still in use, especially handy when surveying from kayaks. Data are recorded on docs provided by Lakes and Ponds division.

We don't use tools to harvest samples from the lake bed, we don't disturb anything growing in the lake bed, and we grab anything that may be floating that looks suspicious. Recent use of cell phone cameras to send photos have been effective.

VT Lakes and Ponds have provided excellent resource books in their VIP trainings with photos and drawings to help in identifying aquatic invasive species. These are updated from time to time.

Continuing to provide resources- handbooks, posters etc.- would help us as we seek to expand our programs. We hope Lakes and Ponds will continue to provide local, in person VIP training opportunities. ELPA continues to raise awareness and provide information on Lakes and Ponds programs via our newsletters, Annual meetings and person-to-person interactions around the lake. We are very proud to have many lakefront property owners and properties approved as "Lake Wise", have provided owners of rental properties with folders full of educational resources to allow their renters to be aware of efforts to protect our water quality.

We have also partnered with our Town to apply for Better Back Roads grants, have petitioned for and received annual donations from the Town to the ELPA for many years running (\$1,000 a year), and most recently are working with Lakes and Ponds and the Town of Charleston to petition to have Echo reclassified as an A1 water body in order to access resources to reverse an upward trend in Phosphorus levels. We recently informed our Vermont legislators about our reclassification efforts and urged that all eligible

water bodies be reclassified and upgraded asap and that every effort be taken to ensure that no waterbody ever be downgraded in its classification.

We appreciate the active partnership we have built and maintained with the State, the Town of Charleston, and our Echo Lake community to preserve and protect our lake for future generations.

Amazon Smile

By Tom Wagner

As a reminder, you can contribute to your association whenever you shop on Amazon. Amazon will pay ELPA .05% of your purchases, and it won't cost you anything. Follow the link below to sign up. Once signed up, you must use the Smile Amazon page to make your purchases count. The easiest way to make sure you are ordering through Smile is to bookmark SmileAmazon on your tablets, mobile phones, and computer. If you use the Amazon app, your purchases don't qualify for their donation. If you don't want to bookmark SmileAmazon, then you must enter SmileAmazon into your browser. The good news is that it will recognize your account. Amazon has made it a bit of a pain, but every donation the association receives helps support our mission, so selection of ELPA for your SmileAmazon donations is greatly appreciated.

The Echo Lake Association signed up for Smile part way through 2021 and received \$54 by the end of 2021. As more members have purchased via Amazon Smile our totals have increased. Through the end of March ELPA received another \$96 bringing our total to \$150. Once you have an account, you will be able to see how much has been donated on your behalf and the total donated.

The link is <https://smile.amazon.com/ch/23-7105668>. If you prefer not to click on links but want to make ELPA your AmazonSmile donation recipient, go to smile.amazon.com and then choose Echo Lake Protective Association as your recipient. Be sure to choose the one in Charleston, Vermont. You would be surprised how many Echo Lakes there are. Thank you!

Nancy Tessier Remembered

September 5, 1941 - December 27, 2021

It was 1987 when Nancy Tessier first visited the Northeast Kingdom and Echo Lake. Looking for a summer cottage three hour's drive from her home in NH was not the commutable summer destination originally envisioned. But there it was, pristine Echo Lake, and a cottage she immediately embraced, nestled into the lake shore next to the inlet leading from Seymour Lake. It only seemed appropriate to name this cottage "Loonacy", not as much for the loons that were there that day, but rather because it seemed sheer lunacy to land upon this remarkable oasis in the Northeast Kingdom. The decision to buy a place at Echo would soon become Nancy's second home for the next 34 years.



At the outset the sellers of the property perceived Nancy's obvious leadership skills and promptly appointed her to the Board of Directors of the fledgling Echo Lake Association. This affiliation began the long commitment to the Association and to the mission of keeping Echo Lake a pristine, unique, almost secret, true treasure in the Northeast Kingdom.

Whether swimming or kayaking in summer, skiing or snowshoeing in the winter, or just walking the 5 miles around the lake with a friend or her dogs, Nancy absorbed the aura of the place and its people in every season.

Even when she built a house on Winape Hill and lived there full time for 8 years, she had a small lot on Echo because she wanted the close connection to the water.

Eventually, that lot became the site of a new cottage in 2012 and afforded her the opportunity to spend even more time there, sharing it with friends and family as often as possible. Nancy was never happier than when she shared this special place hosting countless gatherings with great food, laughter, and always the view of the lake in every weather condition possible. She also never missed the opportunity to impress on guests the importance of taking care to protect the lake to insure it would continue to be a source of peace, good fishing, and enjoyment for all who were lucky enough to experience its restorative energy.

So, when there's a brilliant sunrise, a stunning sunset, a lightning storm or fresh falling snow, Nancy's spirit will still be there to remind us of how lucky we are to share this unique place called Echo Lake.

Remembering in friendship, Mary Kenison

Lakebed Survey

By Peggy Stevens

The Echo Lake Lakebed Survey team is ready to resume our survey in the summer of 2022. As usual, we will be covering the entire lakebed thanks to our team of volunteers who have been dedicated to this project over the last many years.

As you know, our survey is the second line of defense in protecting Echo from the threat of invasive plant species from entering our ecosystem and taking hold, forcing out native species and creating a nuisance to recreational users, hastening decline of our lake water quality, as well as damaging the scenic beauty of our lake.

Peggy Stevens will be coordinating the survey team and is available to answer any questions about plant species that may arise. New volunteers are always welcome. Call Peggy at 723-5951 if you are interested or have questions or concerns about the lakebed adjacent to your waterfront property. If we all keep an eye out for any changes in our immediate surroundings, we can continue to keep invasives at bay.

We await news from Kim Jensen about upcoming Vermont Invasive Patrollers workshops, which are helpful but not necessary to participate in the lakebed survey.

We also want to continue with our small group survey tours with Larry Martin, who has coordinated the survey on his pontoon boat. This would be a great way to introduce new surveyors to the nuts and bolts of the survey operation.

Concerns about tires, that have apparently been being planted on our lake bottom as an attempt to create fish habitat, have been forwarded to Kim and others in the Lakes and Ponds division. A No Dumping sign is scheduled to be posted at our Access Greeter station- that's the best we can do as far as signage goes. We will continue to survey for tires and retrieve them as possible. We fished out over a half dozen in each of the two previous summers.

We will keep our neighbors and friends on Echo Lake posted on any other developments. Thanks for your concern for preserving and protecting our lake's superior water quality.

Echo Lake Protective Association
PO Box 41
East Charleston, Vermont 05833

For more information, visit our
website -
<https://www.echolakeassociation.net/>



Aerial Photo of Echo Lake by Doug Gimler at www.nekwildlifephot.com

Membership Report

By Tom Wagner

In January, we asked you to make a New Year's Resolution to help us with our cash flow by paying your dues early. The response has been very positive, and we appreciate it. Through March, 40 families and individuals have paid meaning 41% of our members who paid last year have supported our early payment request. Thank you, *EARLY BIRDS*.

There is still plenty of time to pay your dues before we kick off the summer season on Memorial Day weekend. Please help us meet our goal.

Here's a link to our website
<https://www.echolakeassociation.net/13-2/>

Or the membership Dues and Donation form
<https://www.echolakeassociation.net/wp-content/uploads/2021/01/ELPA-Membership-Dues-Form-2021-1-1.pdf>

Last year we ended the season with 98 paid Members and Friends, and we are hoping to expand our membership this year.

Save the date of our annual membership picnic, Saturday August 13th on the combined lakefront of the Wilsons, Koenigsbauers and Beamses on West Echo Lake Road. More to follow! It's a great opportunity to connect with friends from all over the lake.

Wake Boat Petition

By Holly Bull

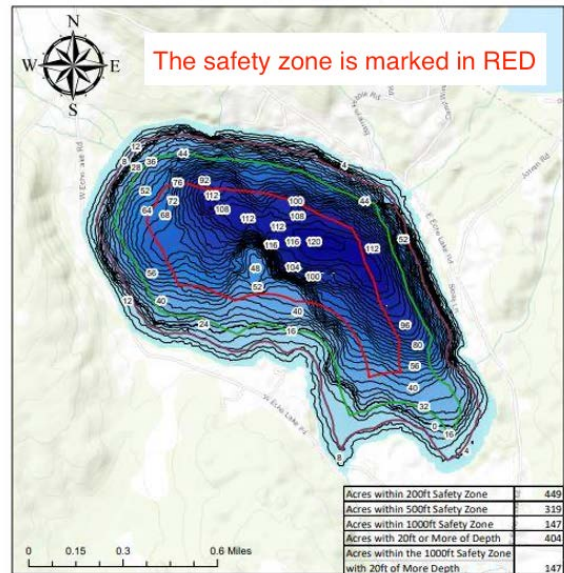
Over the winter, the ELPA board had the opportunity to offer a Letter of Support to the group Responsible Wakes for Vermont Lakes (RWVL). RWVL has submitted a petition to the Department of Environmental Conservation (DEC) to regulate wake boat activities.

Wake boats are specialized boats that have ballasts (holding tanks) and other unique attributes that enable the boats to produce large waves (up to 4 ft.) so people can wake surf behind them. These boats produce powerful waves that are much higher and stronger than a conventional power boat, which is why the ELPA was compelled to support this initiative. The angle of the motor and the ballast system associated with wake boats is a concern to ELPA due to the ability to transport Aquatic Invasive Species (AIS), scouring of the bottom of the lake, the possibility of disturbing our loons’ nest, shoreline erosion and the potential damage to property such as docks, moored boats, and swim rafts.

RWVL’s petition would require a ‘safety zone’ specifically designed for each lake. These safety zones would keep wake boats 1,000 ft. from

shore and operate in waters deeper than 20 ft. which would minimize any detrimental effects to the shoreline and the lake bottom. RWVL’s petition will cover all Vermont lakes and ponds except Lake Champlain and Lake Memphremagog, has been marked “administratively complete”, and is posted on DEC’s website (<https://dec.vermont.gov/watershed/lakes-ponds/rulemaking>).

Echo Lake, Charleston, VT



Pump Your Poop and Save \$\$\$\$\$

By Tom Wagner

The State of Vermont Best Management Practices recommends pumping your septic system every 3 years, or at the frequency recommended by your septic pumper, based on your system. Keeping your septic in good working order is a critical link to maintaining our water quality. Phosphorous levels in lakes can rise because of septic system seepage. Phosphorous levels on Echo have trended up in recent years, and while these levels remain very good, we need to make sure we are doing everything possible to minimize and reduce phosphorous, as high phosphorous levels can cause algal blooms that eventually reduce water quality, kill aquatic animals and plants, and form toxins in the water.

We have negotiated a Group Discount with Taplin's Septic Service. Taplin will pump each septic system for \$265, a discount of \$35 from their usual \$300 fee. This represents a 12% reduction and is one of the few things in our lives

not increasing in price. We need to have at least 5, which is the capacity of one truck. There is no limit on the number who want to be pumped, we just need to have multiples of 5 so they fill up a truck.

Pumping your septic is a good "insurance policy" for Echo. Even if you were to pump at \$300 every 3 years, your cost would amount to \$8.33 a month. So, please take advantage of this generous offer.

Taplin's Septic Service has a relatively new owner, Hans Laggis, who purchased the business about 3 years ago as an employee of Taplin's. He is personable and very professional.

To take advantage of this offer, email Tom Wagner wagsvt@gmail.com who will coordinate with Taplin's. *DO NOT CALL TAPLIN'S.*

Charleston School Program

By Peter Bestenbostel

The school programs for which ELPA provides funding are not simply add-ons. It is reaching kids at an age when the lessons will stick.

Siskin Program

Here is Mary Lahar a teacher at Charlestown Elementary school describing how the Siskin program integrates with her classroom curriculum.

Friday, April 1st. Prior to the visit, Jason Brueck reviewed watersheds and how they are connected. He discussed different types of pollution with the third graders and how it gets on our playground and how it ends up in Echo Lake. They discussed pollution that is easier to clean up like discarded masks and pollution like mercury that ends up in Echo Lake that is very difficult to clean up. Connected to this discussion, Jason reviewed the water cycle. Before the trip, Jason also taught students how animals are able to survive the winter in

the water even when there is ice on the lake. Jason's work ties in well with our science and social studies curriculum. The program ties in with our units on Animal Survival, Weather and Climate and Vermont Studies.

NorthWoods program:

The following update on the after-school program is from Andy Cappello, education director at Northwoods. He sent the photo as well.

The Echo Lake Explorers have been happy to explore the watershed without the need for skis or snowshoes, even if that means a little slush in our shoes. Recently we took a trip to the Nulhegan Basin to get a look at the wildlife at Moose Bog. While there we observed a Canada Jay who was scouting us as a potential food source to the point where the Jay was going to land on the hand of one of our participants before she got a little spooked by its attempt, and it simply returned to its perch for more observation. On our hike out we were greeted by a Spruce Grouse, who true to their species' habits, perched on a limb a few feet off the trail letting us get within a few feet. Not true to its species norm, however, it did not fly off as we approached, allowing us to take pictures and say

"hi".



We've also hiked the Echo Lake inlet up to the dam identifying mosses, ferns, and trees along the way. We've practiced archery with plans to mix in some atlatl work soon. Next week we're taking a trip to a backyard sugar-making operation for a little springtime treat.

Editor's Note: Invented some 17,000 years ago, an "atlatl" is a spear-thrower that uses leverage to achieve greater velocity, and includes a bearing surface which allows the user to store energy during the throw.

2022 Calendar of Events

- Sat, May 7 – Green Up Day
- Tues, May 24 – ELPA Board Meeting
- Fri, June 3 – FOVLAP June Seminar
- Sat, June 18 – NCH 5K
- Sun, July 3 – ELPA Color Challenge
- Sat, July 16 – ELPA Annual Meeting
- Sat, Aug 6 – Circle of Friends Bazaar
- Sat, August 13 – ELPA Annual Picnic
- Sat, September 8, FOVLAP Annual Meeting
- Sat. September 17, ELPA Board Meeting

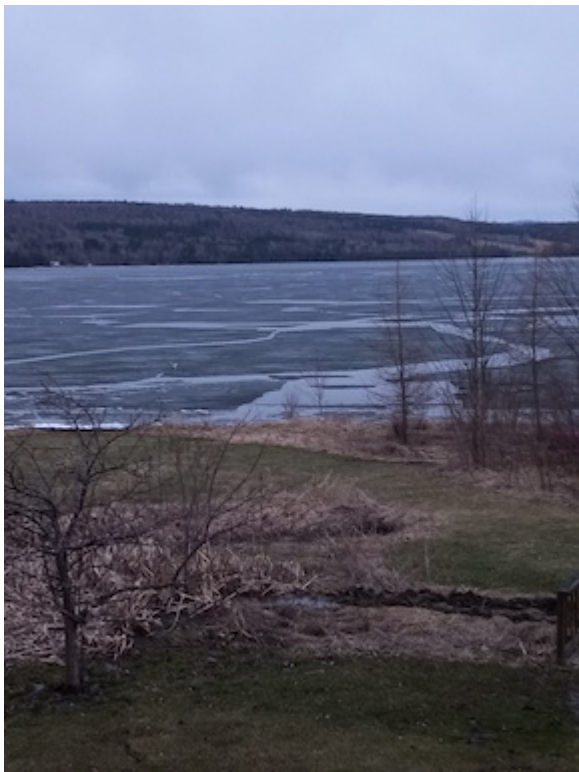


Photo by Ann Hunsicker

Vermont Conservation License Plates


A reminder that half of the proceeds derived from the sale of Vermont Conservation License Plates goes towards funding the Vermont Watershed Grant Program, of which we are a recipient. If you are a Vermont resident, please consider purchasing a Vermont Conservation License Plate to support this program.



Winter's End

Wake me when spring has sprung
when the cold is gone,
and skies no longer gray.
Rouse me with the cries of birds
a warm wind blown my way
and a green light in the shade.
Dress me in the blooming buds,
Let butterflies be my lips,
And raindrops as my eyes.
Replace my heart with a shining star
And fill my head with a soft white cloud.
Drip the shine of morning in my veins
And I'll have the fresh green grass for my hair.
Take my bones for branches.
Make my tears have a honey-suckle taste.
My breath would be the pollen sifting through the air.
Take me from my sleeping ground
And lay me in the fresh cold stream.
Wake me when spring is sprung,
But until then, I'm going to sleep.

Sarah Kay



North Country Hospital is hosting a 5K run or walk on Saturday, June 18th at 8am – Rain or Shine. Runners and walkers of all abilities and ages are encouraged to join in – there’s no entry fee and donations will help North Country Hospital fund local diabetes education.

Course:
This incredibly scenic and flat 5k (3.2 mile) course begins at the intersections of Eagle Point and the North Derby Road and heads west towards Lake Memphremagog and the Wildlife Preserve along Vermont’s 45th latitude and returns!

The 45th Latitude:
You’ll be running on the 45th Latitude – how cool is that – it’s halfway between the equator and the North Pole – crossing through cities like Deer Island, New Brunswick, Kazakhstan, Xinjiang China, Rgoovi Italy and on and on around the globe. For more information, see <https://www.northcountryhospital.org/lat45/>

Grant Funding Update

By Laurie Gee

I’m very happy to report that this year we will receive the full \$5,000 Watershed Grant to help fund 1) our popular ecosystem education programs for Charleston School students, and 2) our paid Access Greeter program, which aims to keep aquatic invasives out of Echo Lake. Last year, all Vermont Fish & Wildlife Watershed grants were reduced by 20%, so it’s great to be offered full funding again. The 2022 Aquatic Nuisance Prevention grant awards have not been announced yet.

Water Quality – You Can Help

Stop Invasives: Clear ALL plant and animal matter from your boat, kayak, paddles, anchor, fishing gear, etc. BEFORE entering the water.

Check Fishing Gear: Ensure your fishing tackle is lead-free.

Don’t Foul the Lake: Keep trash and plant clippings out of the lake. Avoid gasoline spills. Don’t bathe in the lake.

Scoop the Poop: Put all pet waste in the trash. Prevent pathogens, such as round worms, E. coli, Giardia, and salmonella from entering the lake.

Green Up Day – May 7th

Green Up Day is almost upon us! This year it will be held on Saturday, May 7th. Our thanks to all who participate every year. It’s great to have the lakeside looking so clean as we get into the season.

We can always use more volunteers if you want to

participate and get outside with us! Green Up can include our roadsides as well as the lake. Please let Ann know if you can volunteer this year by emailing her at ahunsicker17@gmail.com. It doesn’t take long and is an important part of keeping our lake healthy. Join us and make it an annual tradition!

ENJOY A SAFE GREEN UP DAY!



Social Distance
6’ from others
at all times.



Wear Gloves
Protect your hands
from dirt & germs.



Wear Masks
Protect yourself
and others.



Tie Up Bags
Keep litter from
spilling out.



Check for Ticks
After Green Up
check your body.



Don't Touch
See a needle?
Find an adult.



Road Caution
Always face
oncoming traffic.

Collect Data and Report To Your Town Coordinator

- How many bags?
- How many tires?
- How many volunteers with you?
- How many miles cleaned?

This data is crucial in helping Green Up Vermont get grants and other funding to keep Green Up programs going.

Visit our website year-round for how to get involved.
802-229-4586 • greenup@greenupvermont.org

GREENUPVERMONT.ORG

Access Greeter Program

By Maryanne O'Brien and Karl Koenigsbauer

Two of our paid greeters — Cheryl Hryckiewicz and Steve Sheltry — are returning to work at our access again this year. We are recruiting to fill the third paid-greeter slot and welcome anyone interested in that position (2-6pm Wed-Sun and all holiday Mondays) to contact Laurie Gee ASAP (laurie.eckels.gee@gmail.com) to apply. As usual, the paid greeters will cover 12-hour shifts Wednesday through Sunday from Memorial Day weekend into September.

We rely on our volunteers to inspect watercraft at the Access on Mondays and Tuesdays. We look forward to welcoming and training additional volunteers to share the crucial work of keeping invasive species out of our beautiful lake! If you are willing to work one 2- or 3-

hour shift a week over the summer, please contact Maryanne O'Brien at Maryanneobrien54@aol.com or Karl Koenigsbauer at Karljk1950@gmail.com.

For your training opportunity, please visit <https://dec.vermont.gov/sites/dec/files/wsm/lakes/AIS/GreeterPage/GreeterTrainingSchedule2022.pdf> to register for your training today. There is a refresher course for those who are already greeters. For new volunteers there is a full training course. Online training sessions are scheduled for May 13, 14, 17, 21, and June 18. In person greeter training is offered on May 21 at 190 Junction Rd, Montpelier, VT.

ELPA Lake Wise Program

By Steve Gratton

Our Echo Lake community has been involved with the State of Vermont Lake Wise Program since 2013. Amy Picotte, the Statewide coordinator of the Lake Wise Program, recently retired. Many of you who have been involved with Lake Wise will remember Amy as a knowledgeable and tireless promoter of best practices for shoreline protection. For years Amy was instrumental in training many volunteers on the importance of planting buffer zones with native vegetation, reducing our mowing and fertilizing and of course doing all we can do to help prevent harmful runoff into our lake. Her

efforts certainly helped Echo Lake become the recipient of the Golden Lake Wise Award.

A new VT Lake Wise Program and Shoreline Protection Coordinator will be starting this spring. I look forward to continuing to work with these valuable educational programs.

If you have any questions regarding the Lake Wise Program please contact me at sgratton911@gmail.com or call 603-848-2131.

Support our Local Businesses

By Patti Lennon

Many local businesses are struggling due to the impacts from COVID-19. Please support these businesses by using their services, shopping or dining with them and purchasing gift cards. These businesses are not only the backbone of our community but have given much support to ELPA throughout the years.

- Century 21 Farm & Forest,
- The Chronicle, Inc.
- Columbia Forest Products
- Community National Bank
- Concept 2 Rowing
- Conley Country
- Gervais Hardware
- Hayes Ford
- Dr. Hugh's Dental
- Island Pond Health Care
- Martin Appraisal Services, Inc.
- Nadeau's Plumbing & Heating
- North Country Federal Credit Union
- North Country Hospital
- Northern Counties Health Care
- Noyle Johnson Insurance
- Passumpsic Savings Bank
- Paul DeCelles Financial Services
- Poulin Lumber
- Tardiff Heating & Mechanical,
- Taylor-Moore Agency
- WalMart
- White Birch Lodge
- Wright's Plumbing & Heating
- Agway
- All About Home
- City Cinema
- Country Thyme
- Cumberland Farms
- Derby Village Store
- Devaney Farm Stand
- Essex Tavern
- Foggy Goggle Osteria
- Hoagies Newport
- Home and Hearth
- Kinney Drugs
- L&R Automotive
- Lines & Designs,
- Louis Garneau,
- My Salon
- Nature by Design
- NEK CBD
- Newport Natural
- Orleans Country Club
- Pick & Shovel
- Pie & Pasta,
- Price Chopper
- Roasters
- Shaw's
- SubWay
- Sweet Scoops
- Vista

